

Features:

1. 02~08 circuits available;
2. Material: LCP, Black color;
3. Contact: High conductivity copper;
4. Finished: Tin-plated;
5. 1.08mm square pin;
6. Mates with H5700S12 housing;

Specification:

Current rating: With tinned AWG copper wire

Wire size		N			
AWG	Max Ins Dia	2	3	4	5~8
#12, 4mm <sup>2</sup>	4.11mm	23	20	18	16
#14, 2.5mm <sup>2</sup>	3.75mm	21	17	15	13
#16, 1.5mm <sup>2</sup>	3.18mm	17	15	13	12

Current rating: 23A AC/DC.

Voltage rating: 600V AC (RMS) or 600V DC Max.

Contact resistance: 10mΩ Max.

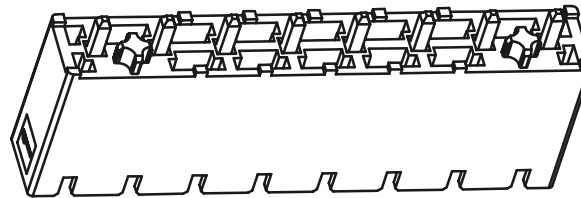
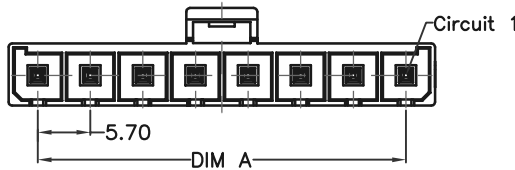
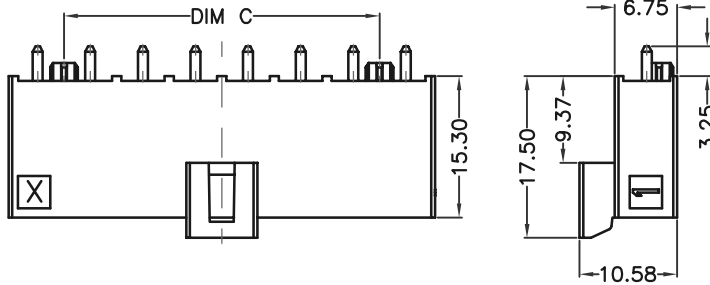
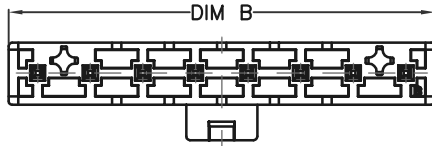
Insulation resistance: 1000MΩ Min.

Withstanding voltage: 2200VAC/minute.

Ambient temperature range: -40°C~105°C.

Dimensional Information (mm)

Circuits	DIM A	DIM B	DIM C
2	5.70	12.00	
3	11.40	17.70	5.70
4	17.10	23.40	11.40
5	22.80	29.10	17.10
6	28.50	34.80	22.80
7	34.20	40.50	28.50
8	39.90	46.20	34.20

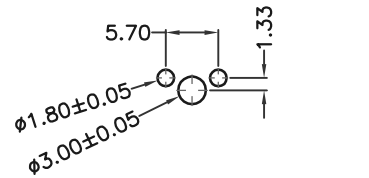


H5700S13-XX

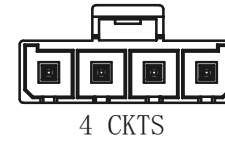
SERIES NO:

PIN Q' PY:

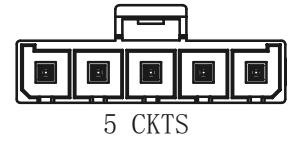
02~08



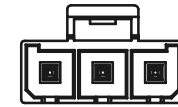
P B C board layout  
2P



4 CKTS



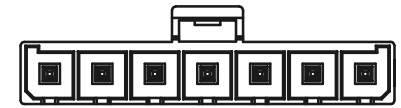
5 CKTS



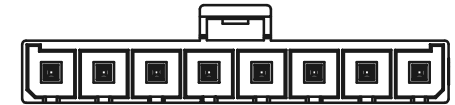
3 CKTS



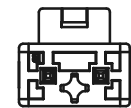
6 CKTS



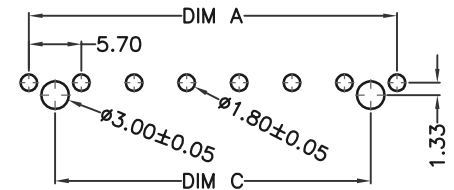
7 CKTS



8 CKTS



2 CKTS



P B C board layout  
3P~8P

REV	Description	DATE	GENERAL TOLERANCES (unless specified)	UNITS	MM	DATE	2021-07-15
			X.X±0.4	SCALE	1:1	DRAWING	Liu zhi guo
			X.XX±0.25	REV	A	CHECKED BY	Li peng
			X.XXX±0.15	APPROVAL BY	OYSW		

东莞市恒创连接器有限公司  
DONG GUAN SHI HENG CHUANG CONNECTOR COMPANY LIMITED

PRODUCT NAME: 5.7 mm vertical header

PART NUMBER: H570013S-XX