

Features:

1. 2~12 circuits available;
2. Material:LCP, Black color;
3. Contact:High conductivity copper;
4. Finished:Tin-plated;
5. 1.08mm square pin;
6. Mates with H5700S12 housing;

Specification:

Current rating:With tinned AWG copper wire

Wire size		N			
AWG	Max lns Dia	2	3	5	6~8
#12, 4mm <sup>2</sup>	4.11mm	23	20	18	16
#14, 2.5mm <sup>2</sup>	3.75mm	21	17	15	13
#16, 1.5mm <sup>2</sup>	3.18mm	17	15	13	12

Current rating:23A AC/DC.

Voltage rating:600V AC(RMS) or 600V DC Max.

Contact resistance:10mΩ Max.

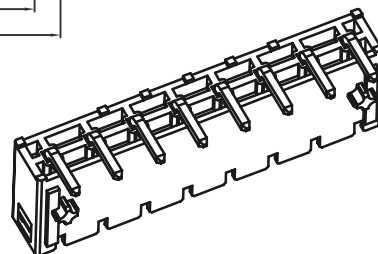
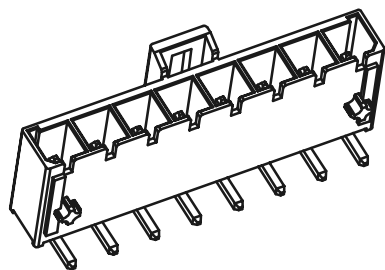
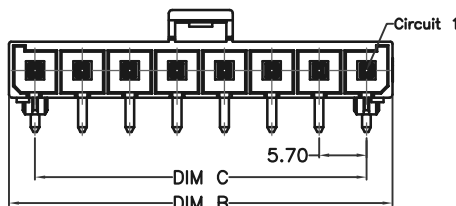
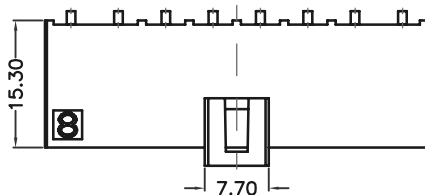
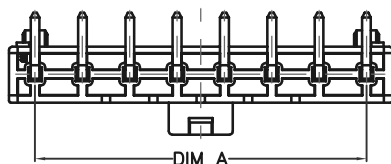
Insulation resistance:1000MΩ Min.

Withstanding voltage:2200VAC/minute.

Ambient temperature range:-40°C~105°C.

Dimensional Information(mm)

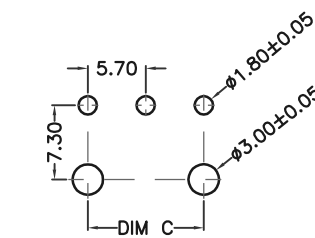
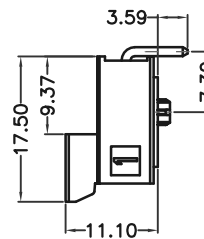
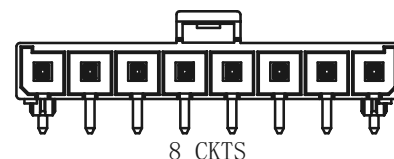
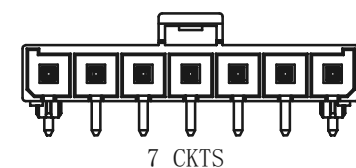
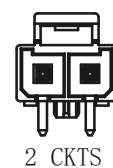
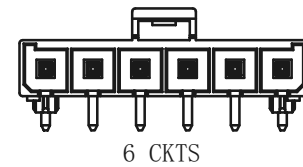
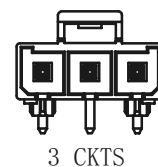
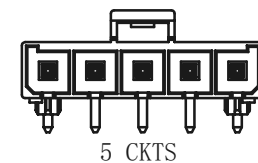
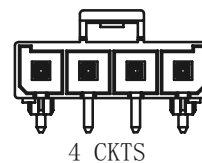
Circuits	DIM A	DIM B	DIM C
2	5.70	12.00	
3	11.40	17.70	11.40
4	17.10	23.40	17.10
5	22.80	29.10	22.80
6	28.50	34.80	28.50
7	34.20	40.50	34.20
8	39.90	46.20	39.90



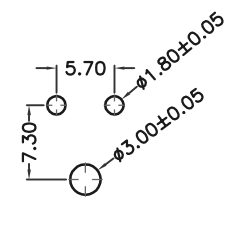
H5700S14-XX

SERIES NO: \_\_\_\_\_

PIN Q' PY: \_\_\_\_\_  
02~08



P B C board layout  
3P~8P



P B C board layout  
2P

REV	Description	DATE	GENERAL TOLERANCES (unless specified)	UNITS	MM	DATE	2016-03-05
A	新版发行	2016-06-05	X.X±0.4	SCALE	1:1	DRAWING	Liu zhi guo
			X.XX±0.25	REV	A	CHECKED BY	Li peng
			X.XXX±0.15	APPROVAL BY		OYSW	

东莞市恒创连接器有限公司

DONG GUAN SHI HENG CHUANG CONNECTOR COMPANY LIMITED

PRODUCT NAME	5.7 mm right angle header
RART NUMBER	H5700S14-XX